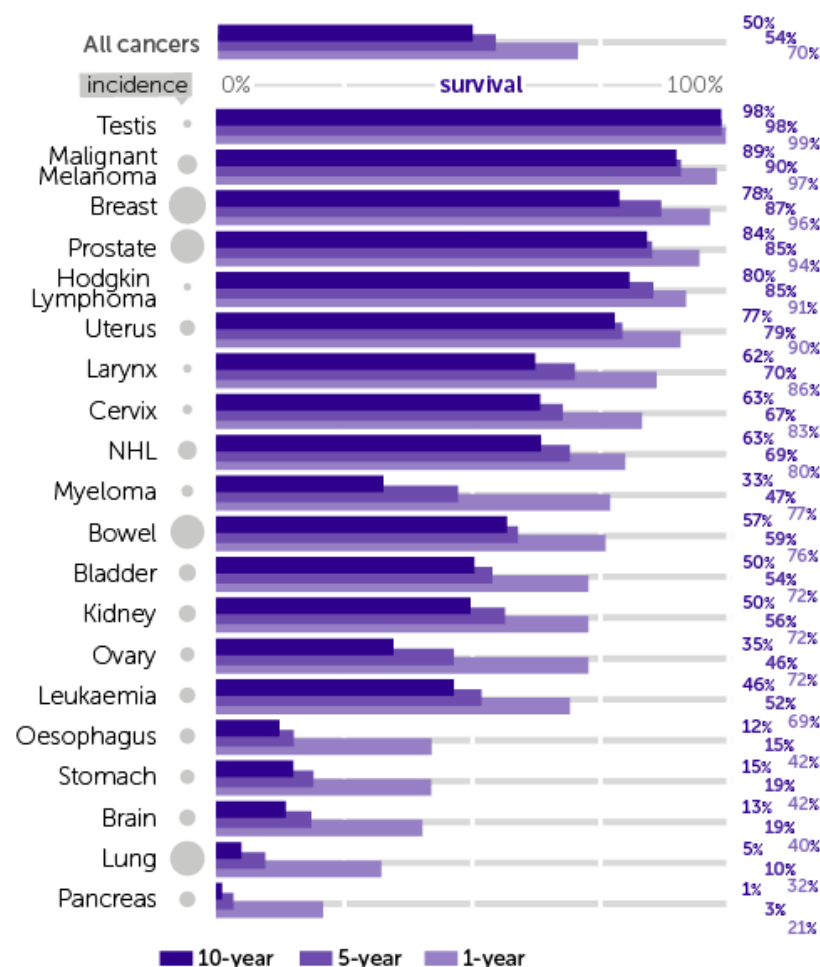


Age-Standardized One-, Five- and Ten-Year Net Survival, Selected Cancers, Adults (Aged 15-99), England and Wales, 2010-2011



Breast is for female only. Laryngeal is for male only.

Five- and ten-year survival for 2010-2011 is predicted using an excess hazard statistical model.

Survival for bowel cancer is a weighted average derived from data for colon (C18) and rectum cancer (C19-C20, C21.8)



Source: cruk.org/cancerstats You are welcome to reuse this Cancer Research UK

statistics content for your own work. Credit us as authors by referencing Cancer Research UK as the primary source.

Suggested style: Cancer Research UK, full URL of the page, Accessed [month] [year].